

FLOOD LIGHT-50W



SECTION 1: GENERAL DESCRIPTION (FIXTURE AND DRIVER)

Voltage:	85-277V
Power:	50W
Type:	Cool White
Base Material:	Aluminum
Light Output:	5132 Lumens
Beam Angle:	120 Degrees
Correlated Colour Temperature (CCT):	5500K- 6700
Fixture Lifespan:	50,000 hours
IP Rating:	65
Dimensions:	290 mm x 240 mm (L x W)
Weight:	2.35 kg

SECTION 2: CERTIFICATIONS MET

- 1) UL Listing : Underwriters Laboratory testing for dependable reliability and lifespan of fixture.
- 2) RoHS Certification: Restriction of Hazardous Substances- Ensuring no toxic chemicals or materials are used in the manufacture.
- 3) CE Certification: Conformity European, Ensuring that this product can be within the strictest standards of Europe.

SECTION 3: LIGHT SOURCE DESCRIPTION (LED CHIP)

LED Shape:	COB
Number of LEDs:	1
LED TYPE:	EPISTAR

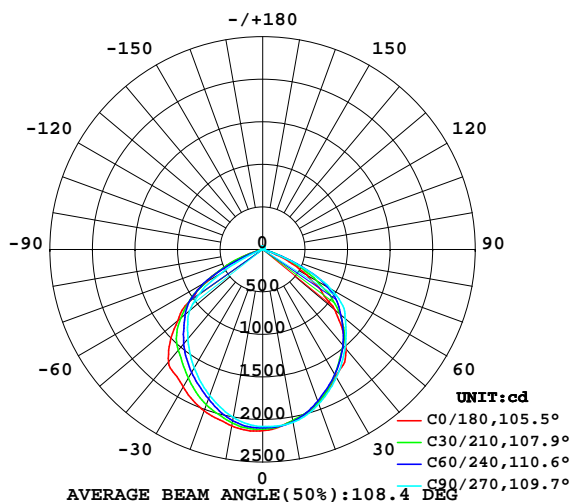
SECTION 4: COMPARABLE OLDER LIGHT SOURCE

150W Metal Halide Flood	50W Flood Fixture
150 Watts Power	50 Watts Power
8,000 Hour Lifespan	30,000 Hour Lifespan
Carries no warranty	Carries 2 year warranty
Contains deadly mercury gas	RoHS certified for no toxic components
Does not function well in cold environments	Works perfectly down to -20°C

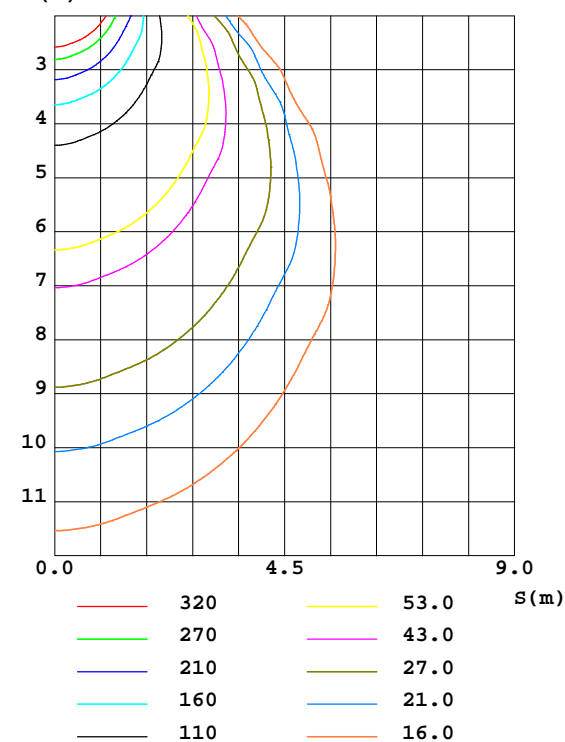
LUMINAIRE PHOTOMETRIC TEST REPORT

DATA OF LAMP		PHOTOMETRIC DATA Eff: 103.97 lm/W			
MODEL	CET-111 50W	I _{max} (cd)	2137	S/MH(C0/180)	1.22
NOMINAL POWER(W)	50	LOR(%)	100.0	S/MH(C90/270)	1.24
RATED VOLTAGE(V)	220.6	TOTAL FLUX(lm)	5219.294	η UP, DN(C0-180)	1.4, 50.1
NOMINAL FLUX(lm)	5219.294	CIE CLASS	DIRECT	η UP, DN(C180-360)	1.5, 47.0
LAMPS INSIDE	1	η up(%)	2.9	CIBSE SHR NOM	1.25
TEST VOLTAGE(V)	220.6	η down(%)	97.1	CIBSE SHR MAX	1.35

LUMINOUS INTENSITY DISTRIBUTION DIAGRAM



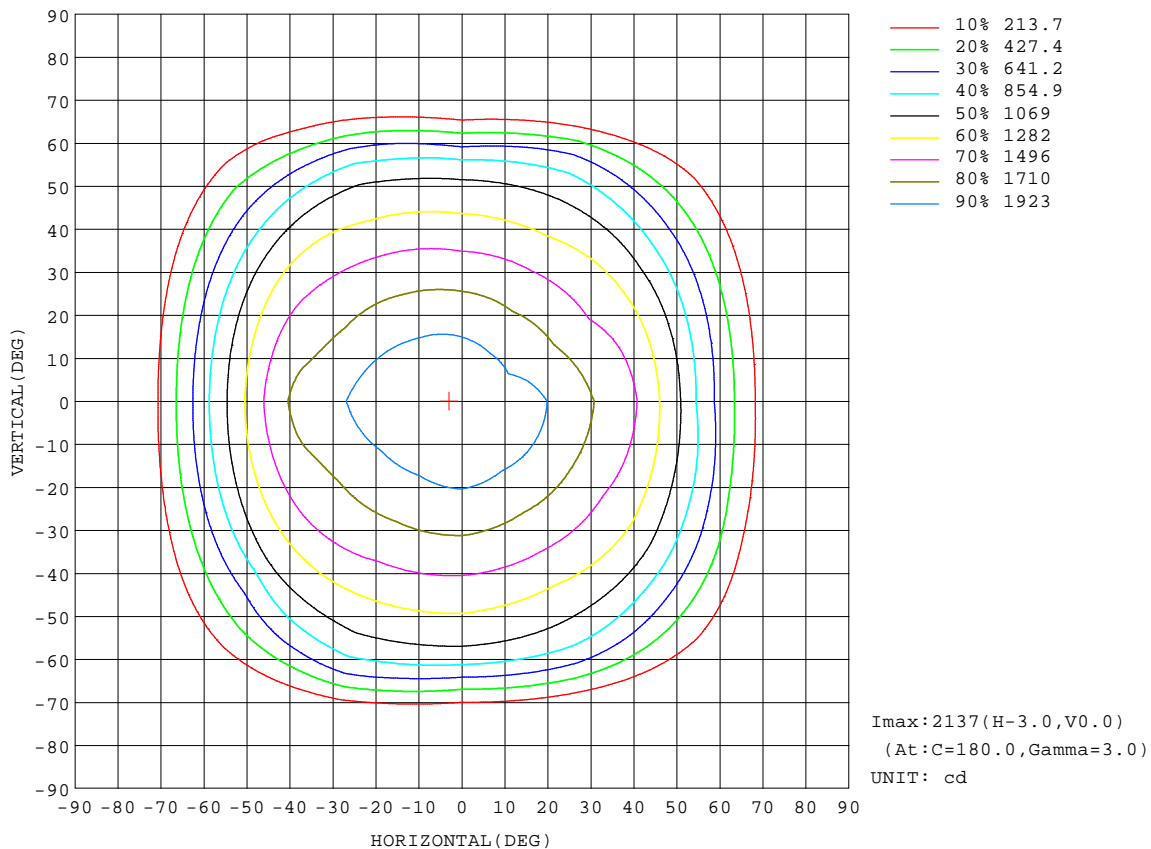
C0 PLANE ISOLUX DIAGRAM (UNIT:lx)



C Range: 0 - 360DEG
C Interval: 30.0DEG
Test Speed: HIGH
Temperature: 25.3DEG
Operators: DAMIN
Test Date: 2017-07-19

γ Range: 0 - 180DEG
γ Interval: 1.0DEG
Test System: EVERFINE GO-2000B_V1 SYSTEM V2.0.267
Humidity: 65.0%
Test Distance: 8.000m [K=0.8125]
Remarks:

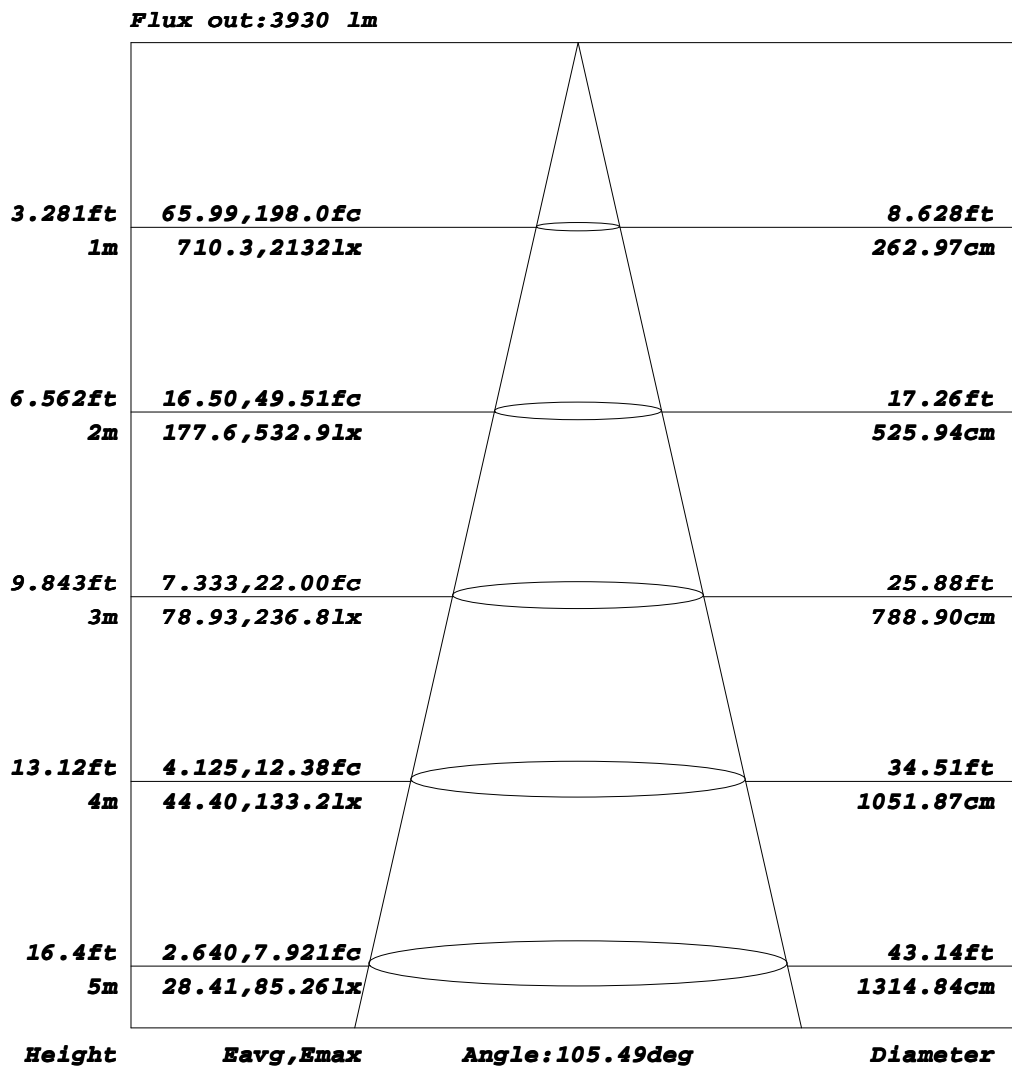
ISOCANDELA DIAGRAM



C Range: 0 - 360DEG
C Interval: 30.0DEG
Test Speed: HIGH
Temperature: 25.3DEG
Operators: DAMIN
Test Date: 2017-07-19

γ Range: 0 - 180DEG
γ Interval: 1.0DEG
Test System: EVERFINE GO-2000B_V1 SYSTEM V2.0.267
Humidity: 65.0%
Test Distance: 8.000m [K=0.8125]
Remarks:

AAI Figure

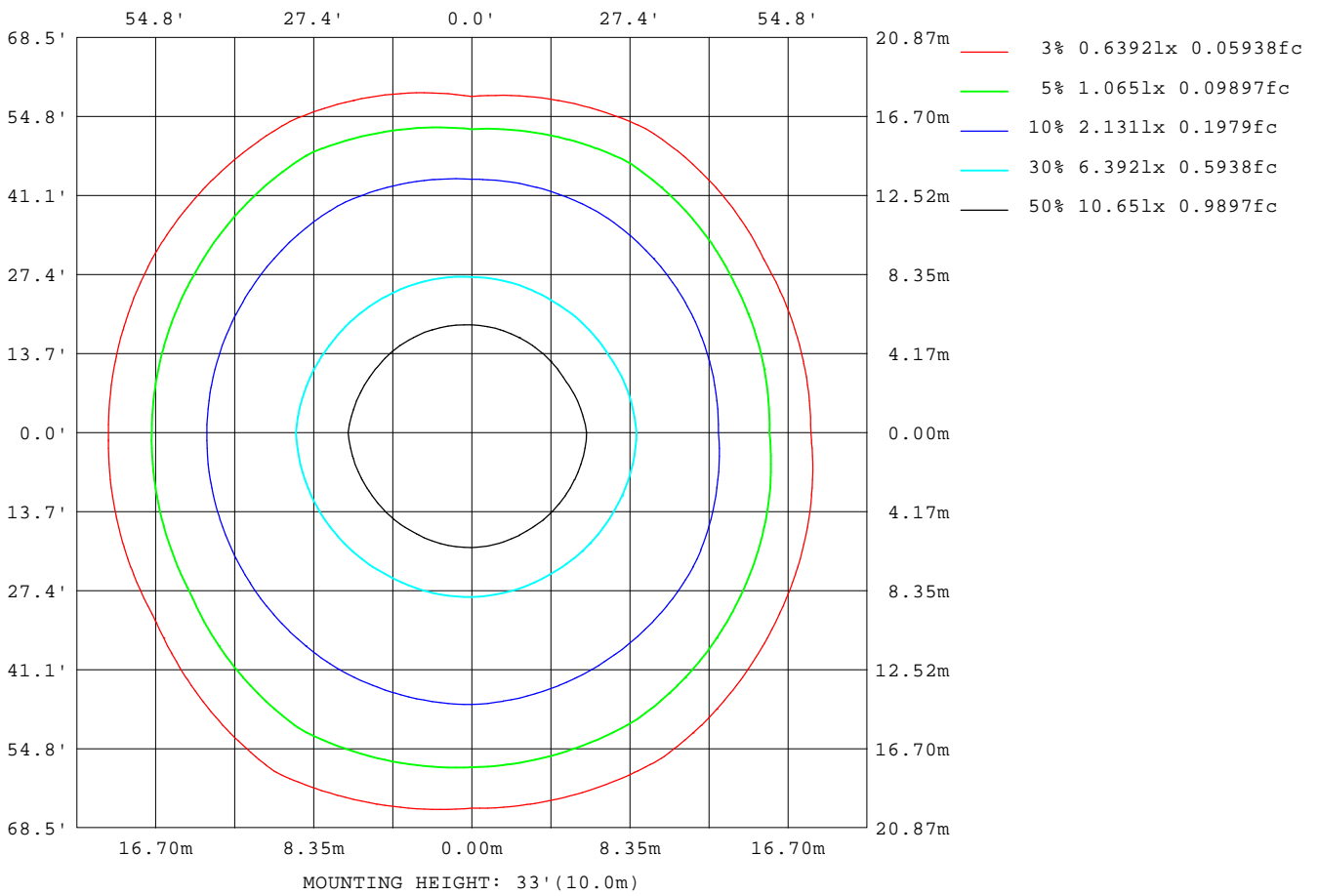


Note: The Curves indicate the illuminated area and the average illumination when the luminaire is at different distance.

C Range: 0 - 360DEG
C Interval: 30.0DEG
Test Speed: HIGH
Temperature: 25.3DEG
Operators: DAMIN
Test Date: 2017-07-19

γ Range: 0 - 180DEG
γ Interval: 1.0DEG
Test System: EVERFINE GO-2000B_V1 SYSTEM V2.0.267
Humidity: 65.0%
Test Distance: 8.000m [K=0.8125]
Remarks:

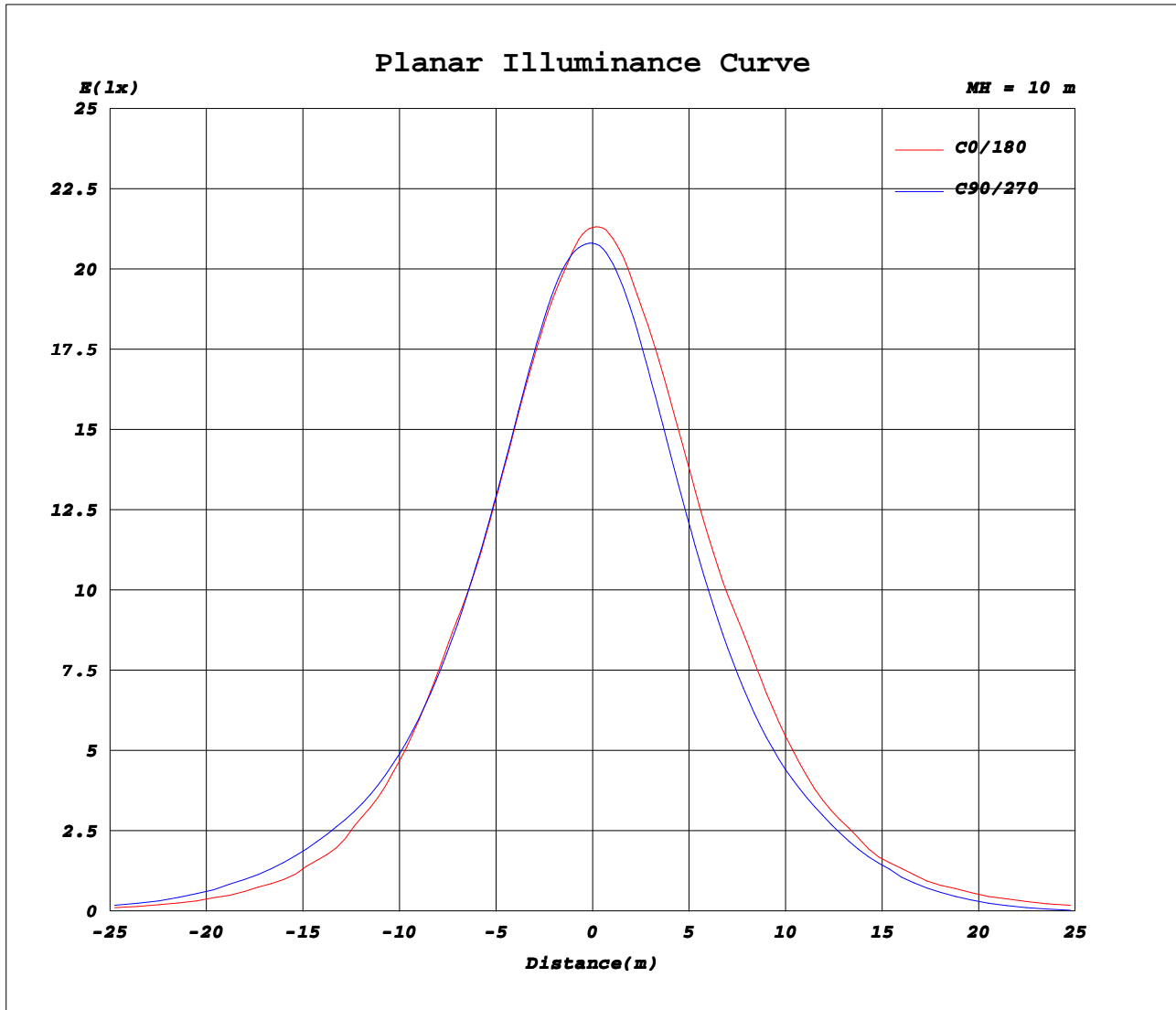
ISOLUX DIAGRAM



C Range: 0 - 360DEG
C Interval: 30.0DEG
Test Speed: HIGH
Temperature: 25.3DEG
Operators: DAMIN
Test Date: 2017-07-19

γ Range: 0 - 180DEG
γ Interval: 1.0DEG
Test System: EVERFINE GO-2000B_V1 SYSTEM V2.0.267
Humidity: 65.0%
Test Distance: 8.000m [K=0.8125]
Remarks:

Planar Illuminance Curve



C Range: 0 - 360DEG
 C Interval: 30.0DEG
 Test Speed: HIGH
 Temperature: 25.3DEG
 Operators: DAMIN
 Test Date: 2017-07-19

γ Range: 0 - 180DEG
 γ Interval: 1.0DEG
 Test System: EVERFINE GO-2000B_V1 SYSTEM V2.0.267
 Humidity: 65.0%
 Test Distance: 8.000m [K=0.8125]
 Remarks: