



5 Inch Downlight

SECTION 1: GENERAL DESCRIPTION (FIXTURE AND DRIVER)

| | |
|---------------------------------------|--|
| Model Number: | VOL-5DL-009-CW |
| Size: | 5 INCH |
| Voltage: | 85-277V |
| Power: | 9W |
| Hue: | Cool White |
| Material: | Aluminum, Polymethyl Methacrylate |
| Light Output: | 650 Lumens |
| Beam Angle: | 120 Degrees |
| Correlated Colour Temperature: | 6000-6500K |
| Fixture Life span: | 50,000 hours |
| IP Rating: | IP 30 |
| Power Factor | 0.9 |
| CRI | > 70 |

SECTION 2: CERTIFICATIONS MET

1. UL Listing: Underwriters Laboratory testing for dependable reliability and lifespan of fixture
2. RoHS Certification: Restriction of Hazardous Substances- Ensuring no toxic chemicals or materials are used in the manufacture.
3. CE Certification: (Conformity European) to ensure that this product can be within the strictest standards of Europe.

SECTION 3: LIGHT SOURCE DESCRIPTION (LED CHIP)

| | |
|-----------------------|-------------------------|
| LED type | 2835 SMD EPISTAR |
| Number of LEDS | 45 |

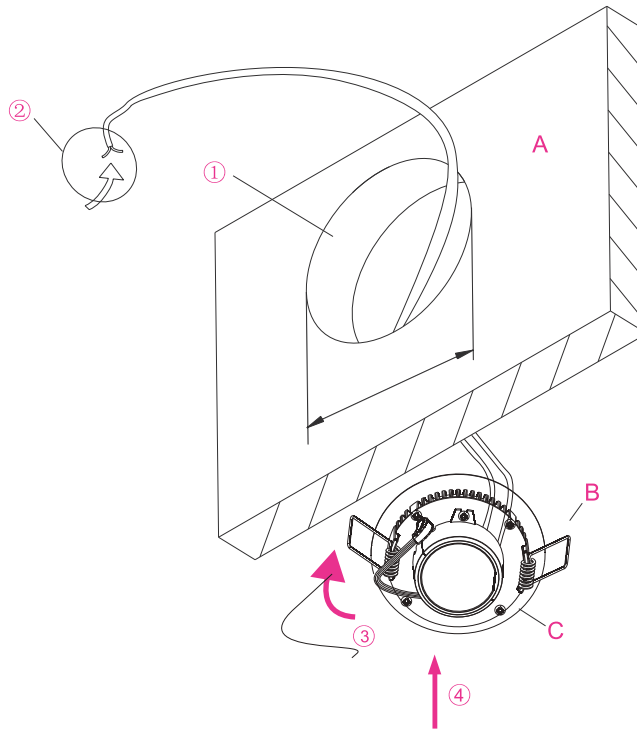
SECTION 4: COMPARABLE OLDER LIGHT SOURCE

| | |
|----------------------------|--|
| 5 Inch LED Downlight | 5 Inch Metal Halide Downlight |
| 650 Lumen | 582 Lumen |
| 9 Watt | 20 Watt Power |
| 50,000 hour lifespan | 200 Hour Lifespan |
| Withstands Voltage Surges | Filament destroyed with small voltage surges |
| Available in Warm and Cool | Only Available in Warm |

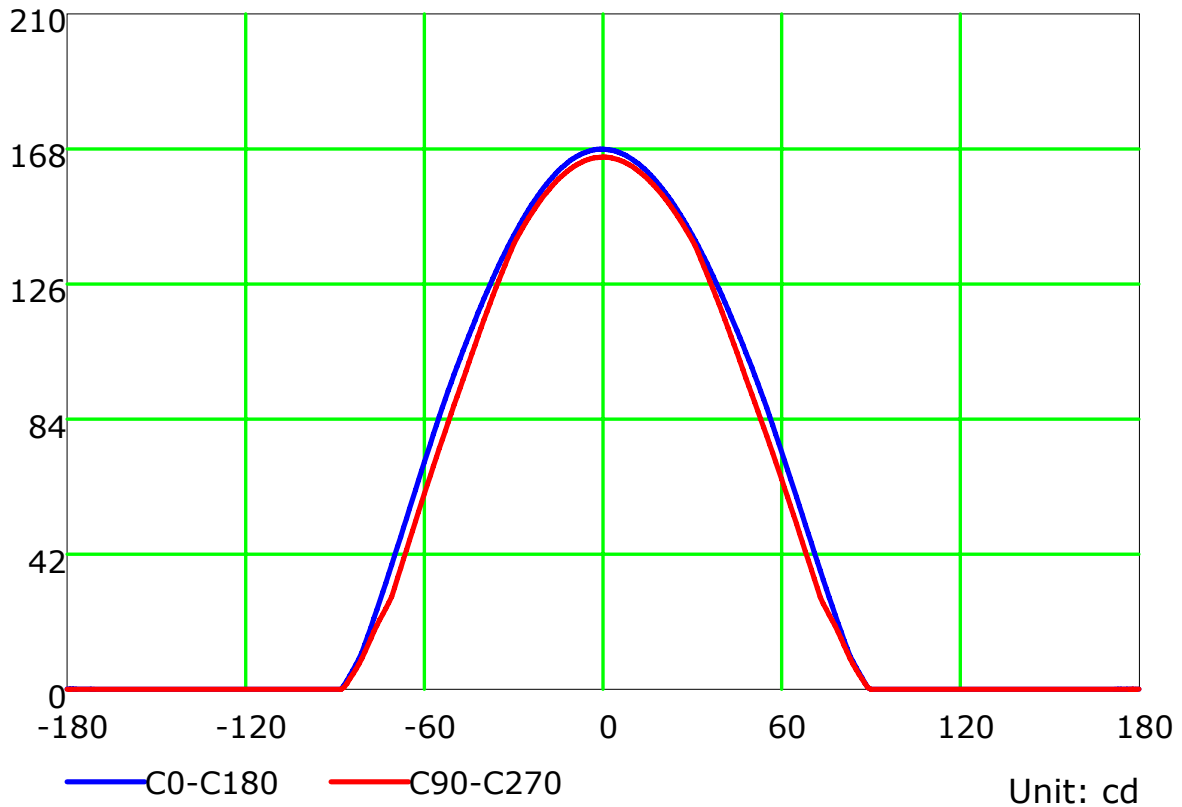
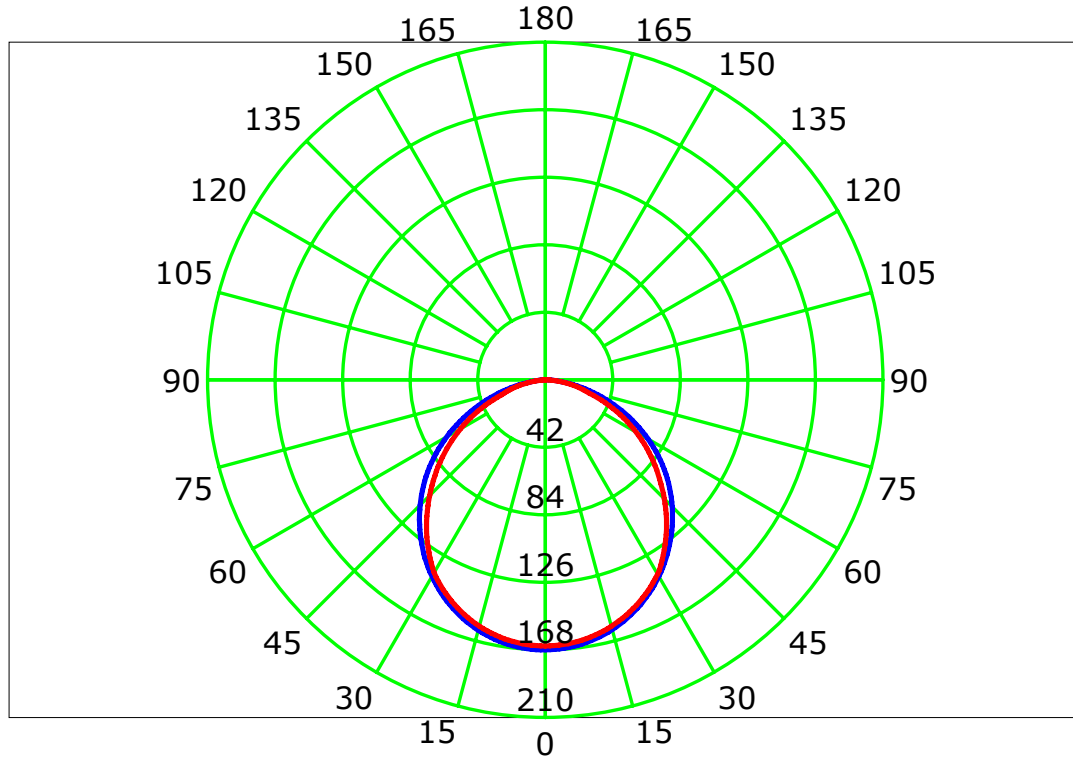
SECTION 5: INSTALLATION DETAILS

| | |
|---|------------------------|
| ① | make a hole |
| ② | connect the power wire |
| ③ | push spring |
| ○ | Driver |

| | |
|---|----------|
| A | Wall |
| B | Spring |
| C | LED lamp |
| D | Driver |



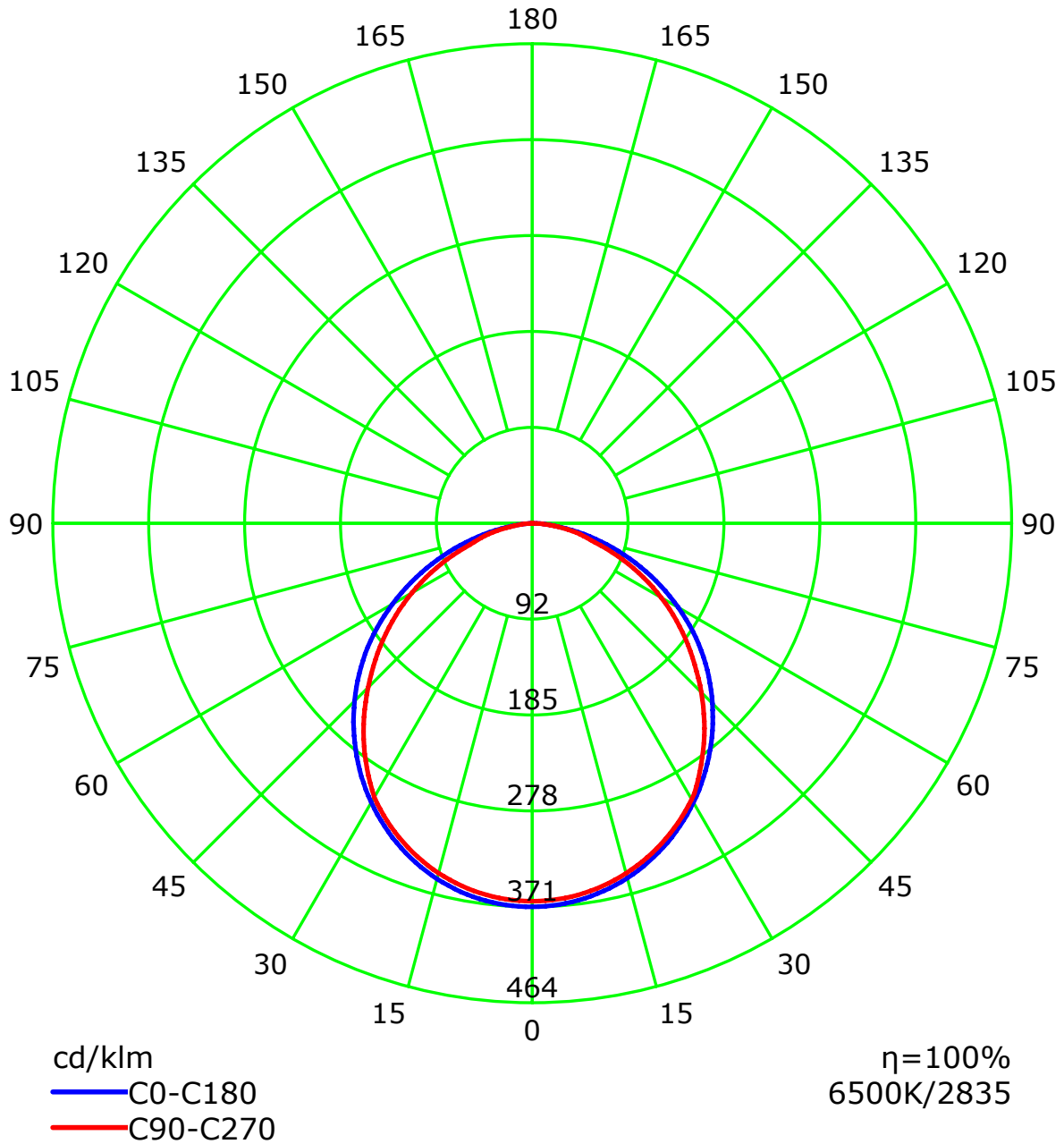
Luminous Intensity Distribution Curve



C Plane (°):0.0-360.0: 45.0
 Test Lab:
 Test Type: TYPE C
 Temperature: 26.1
 Operator: Limited

Gamma Plane (°):0.0-180.0:1.0
 Test Device: GPM-1600
 Distance: 6.495 m
 Humidity: 78
 Inspector:

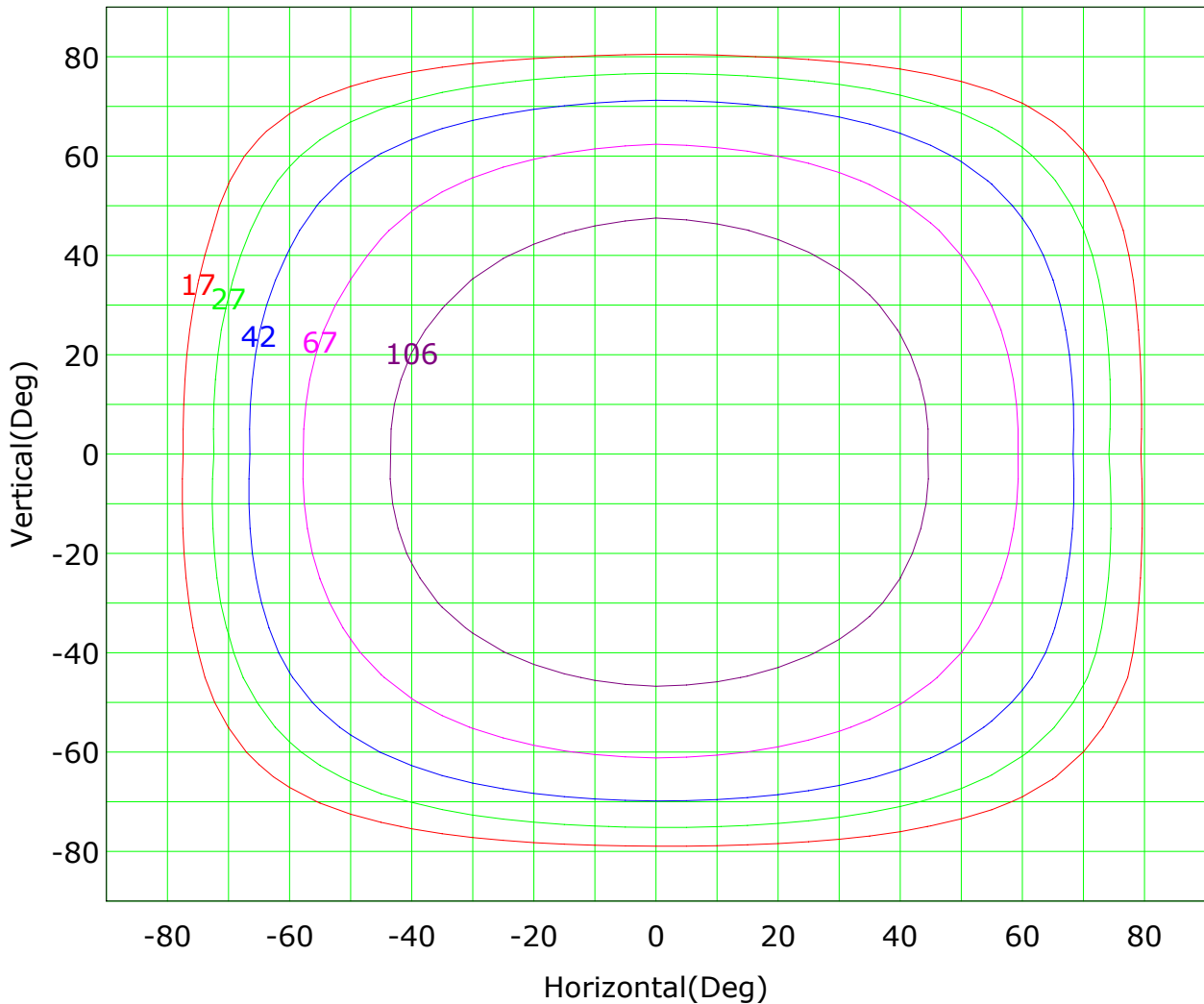
Luminous Intensity Distribution Curve(cd/klm)



C Plane (°):0.0-360.0: 45.0
 Test Lab:
 Test Type: TYPE C
 Temperature: 26.1
 Operator: Limited

Gamma Plane (°):0.0-180.0:1.0
 Test Device: GPM-1600
 Distance: 6.495 m
 Humidity: 78
 Inspector:

Isocandela (rectangle)



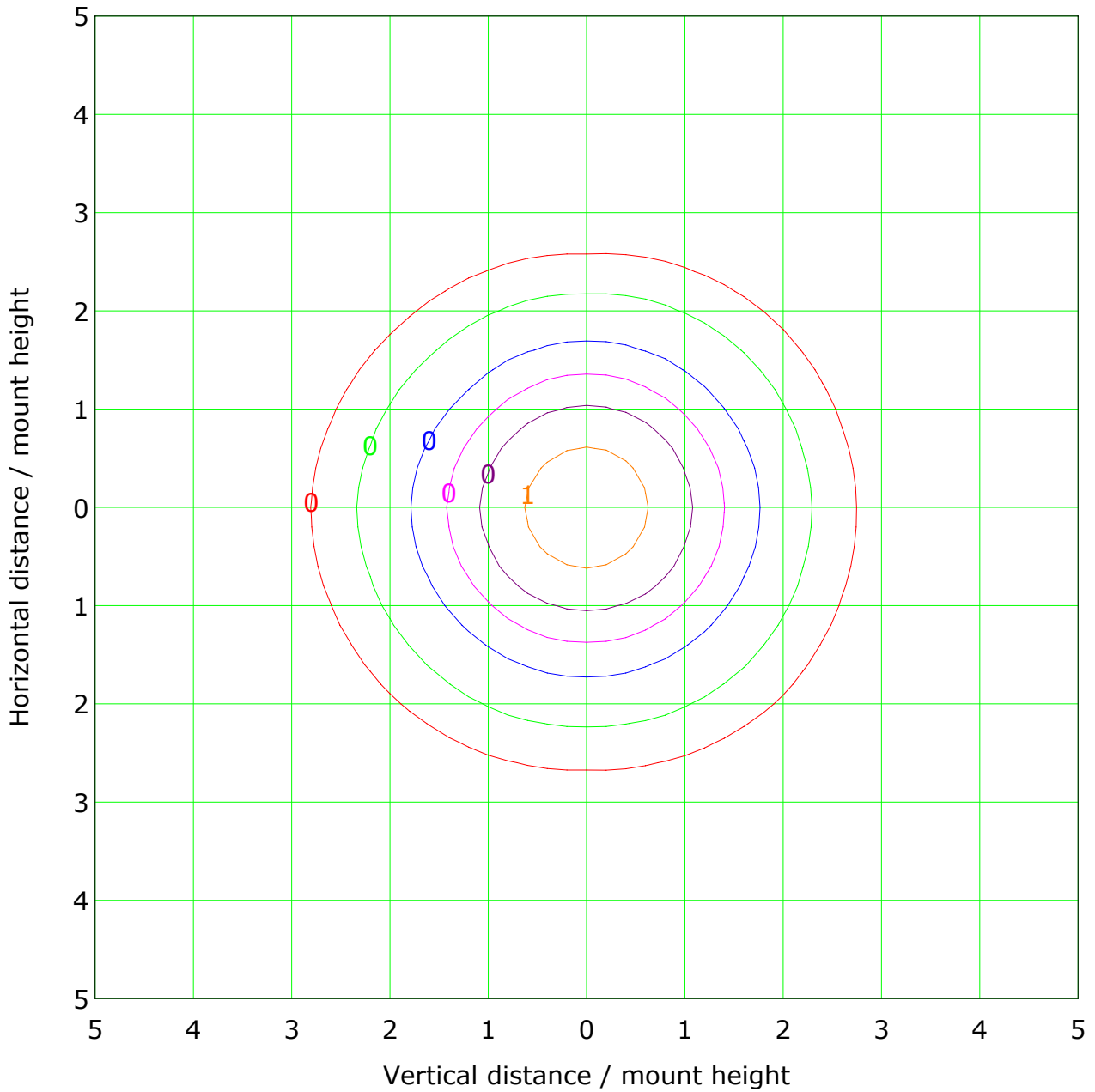
Imax (100%): 169 cd

| | | | |
|-----------|--------|-----------|--------|
| — (10%): | 17 cd | — (16%): | 27 cd |
| — (25%): | 42 cd | — (40%): | 67 cd |
| — (63%): | 106 cd | — (100%): | 169 cd |

C Plane (°):0.0-360.0: 45.0
 Test Lab:
 Test Type: TYPE C
 Temperature: 26.1
 Operator: Limited

Gamma Plane (°):0.0-180.0:1.0
 Test Device: GPM-1600
 Distance: 6.495 m
 Humidity: 78
 Inspector:

IsoLux Plot



Mounting Height: 10.0m Max Lux(100%): 1.7 lx

| | |
|------------------|-----------------|
| — (1%): 0.0 lx | — (2%): 0.0 lx |
| — (5%): 0.1 lx | — (10%): 0.2 lx |
| — (20%): 0.3 lx | — (50%): 0.8 lx |
| — (100%): 1.7 lx | |

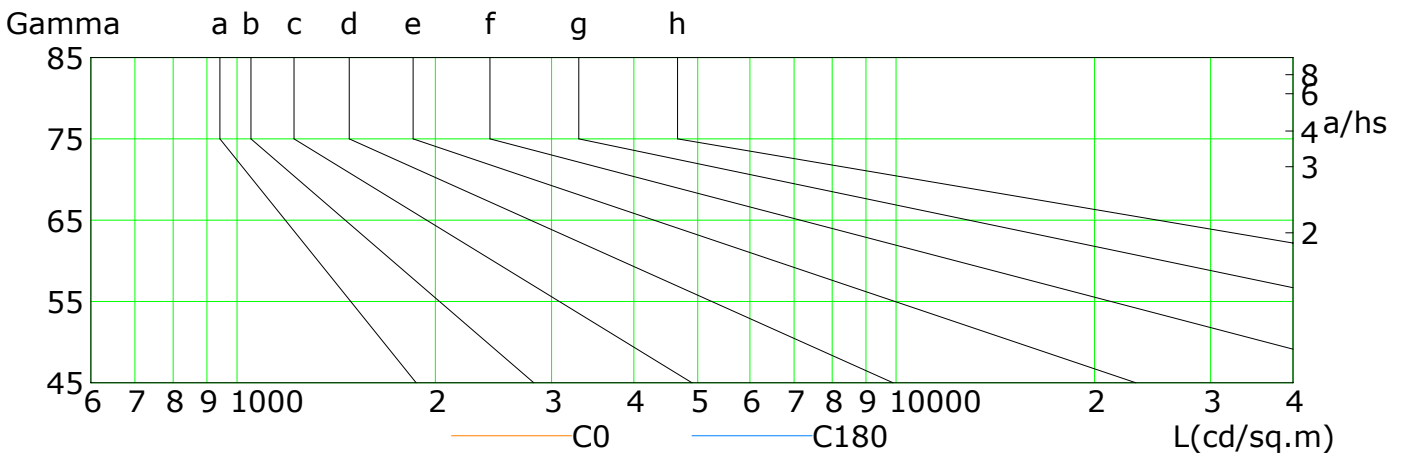
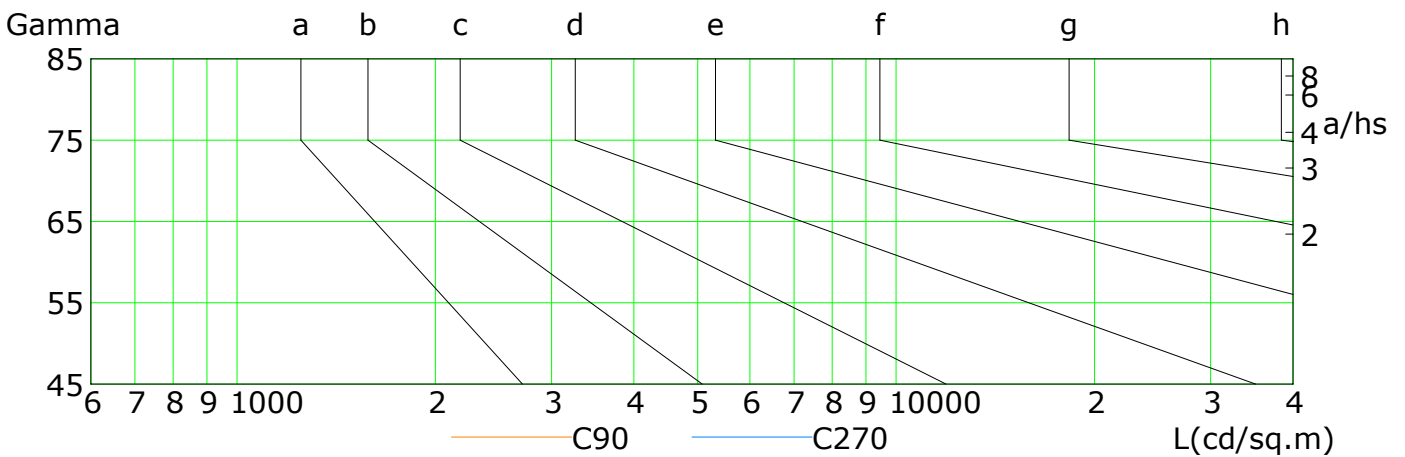
C Plane (°):0.0-360.0: 45.0
 Test Lab:
 Test Type: TYPE C
 Temperature: 26.1
 Operator: Limited

Gamma Plane (°):0.0-180.0:1.0
 Test Device: GPM-1600
 Distance: 6.495 m
 Humidity: 78
 Inspector:

Lum Limit Curve

| Dazzle | Quality | Illuminance (lx) | | | | | | | | |
|--------|---------|------------------|------|-----|-------|--|--|--|--|--|
| | | 2000 | 1000 | 500 | <=300 | | | | | |
| 1.15 | A | | | | | | | | | |
| 1.50 | B | | | | | | | | | |
| 1.85 | C | | | | | | | | | |
| 2.20 | D | | | | | | | | | |
| 2.55 | E | | | | | | | | | |

a b c d e f g h



| L(cd/sq.m) | G45 | G50 | G55 | G60 | G65 | G70 | G75 | G80 | G85 |
|------------|-----|-----|-----|-----|-----|-----|-----|-----|-----|
| C0 | 112 | 100 | 88 | 74 | 60 | 46 | 31 | 18 | 7 |
| C90 | 105 | 92 | 79 | 66 | 52 | 37 | 25 | 16 | 6 |
| C180 | 110 | 98 | 85 | 71 | 56 | 42 | 28 | 14 | 4 |
| C270 | 102 | 89 | 75 | 61 | 46 | 32 | 22 | 12 | 3 |

C Plane (°):0.0-360.0: 45.0

Test Lab:

Test Type: TYPE C

Temperature: 26.1

Operator: Limited

Gamma Plane (°):0.0-180.0:1.0

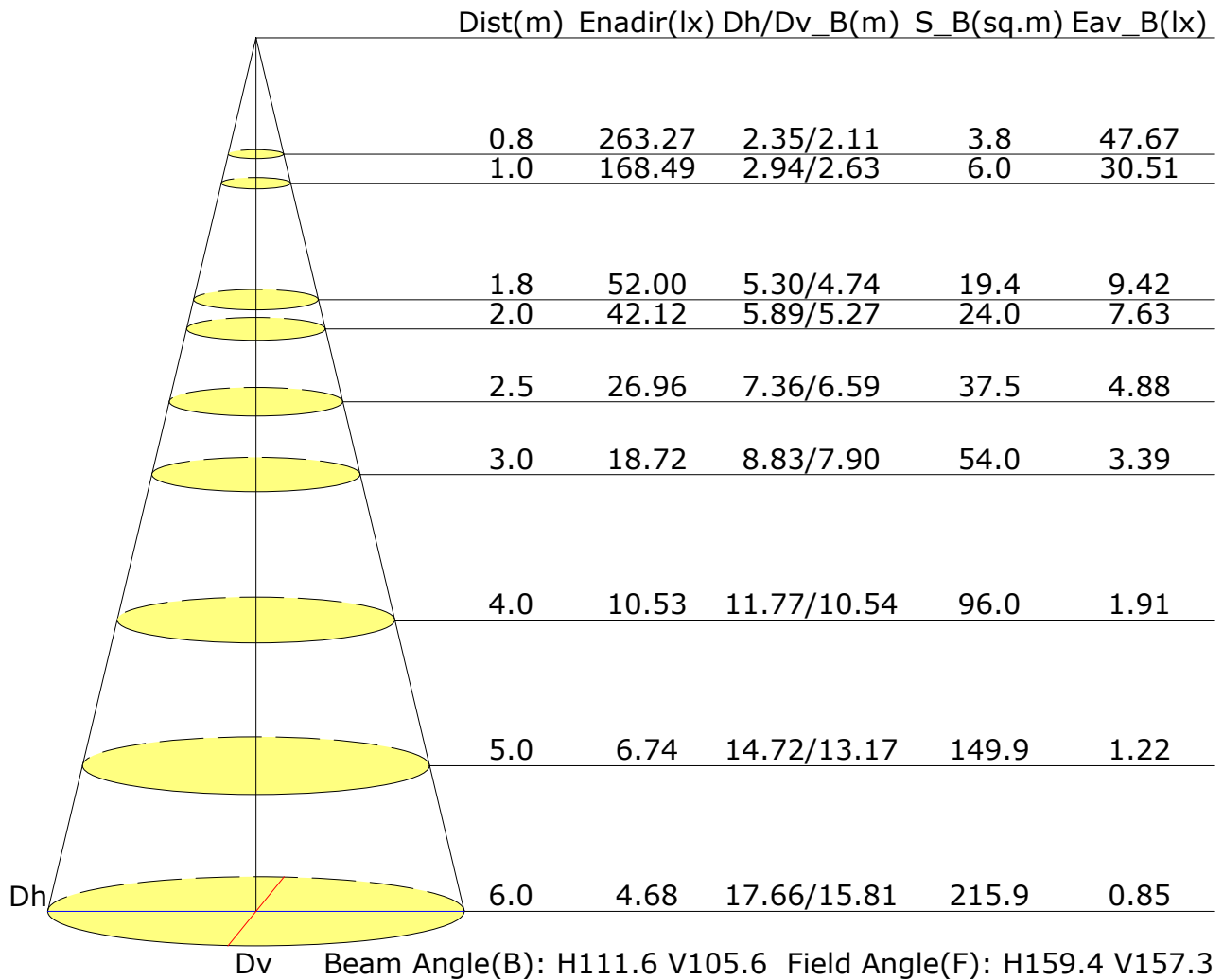
Test Device: GPM-1600

Distance: 6.495 m

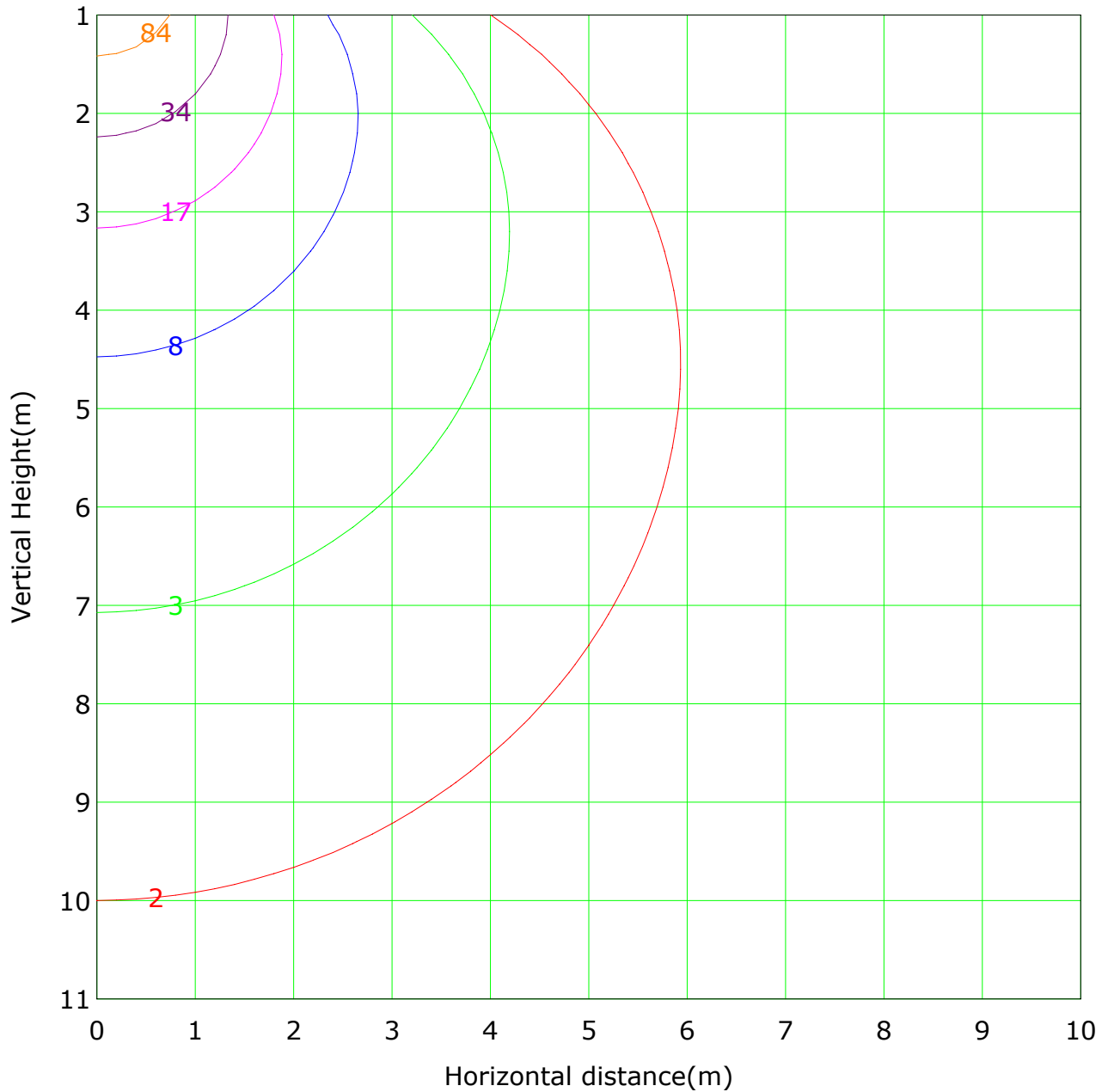
Humidity: 78

Inspector:

Illuminance at a Distance



Vertical IsoLux Plot



| | | |
|--------------------|-------------------|-------------------|
| Lowest(m): 1.0m | Highest(m): 11.0m | Max Lux: 168.5 lx |
| — (1%): 1.7 lx | — (2%): 3.4 lx | |
| — (5%): 8.4 lx | — (10%): 16.8 lx | |
| — (20%): 33.7 lx | — (50%): 84.2 lx | |
| — (100%): 168.5 lx | | |

C Plane (°):0.0-360.0: 45.0
 Test Lab:
 Test Type: TYPE C
 Temperature: 26.1
 Operator: Limited

Gamma Plane (°):0.0-180.0:1.0
 Test Device: GPM-1600
 Distance: 6.495 m
 Humidity: 78
 Inspector: